



NEW CALEDONIA

DOUBLETREE BY HILTON NOUMEA ILOT MAITRE RESORT

(TOUR CODE: 12072)

STARTS AND ENDS

in Noumea

TRAVEL PERIODS

until 31 Mar 2026

EXPERIENCE

Beach

TRAVEL STYLE

Independent Holiday Packages

Indulge in an exciting island getaway in this 4-star resort immersed in New Caledonia's unique traditions and breathtaking surroundings.

Highlights

- Spend **5 nights at the 4-star Doubletree by Hilton Noumea Ilot Maitre Resort**, a beautiful resort exclusively located on a tropical islet
- **Ilot Maitre** is a small tropical islet, **surrounded by 200 hectares of marine reserve, abundant marine life**, coupled with **white sand beaches and blue sea!**
- Lounge on your private deck, embraced by lush greenery and the soothing melody of waves—pure tropical bliss in a **Deluxe Garden Bungalow**

The DoubleTree by Hilton Noumea Ilot Maitre Resort is a prominent 4-star luxury resort in New Caledonia. Upon arriving at Tontouta International Airport, a representative will meet you and take you to Port Moselle, which is about a 40-minute drive away. Enjoy a lovely 10-minute boat ride from the harbour to the Doubletree by Hilton Resort. Spend the next few days unwinding and satisfying your appetite at one of the many restaurants, each with its distinct ambience. Enjoy a unique break deeply immersed in New Caledonia, exclusively located on a tropical islet. Warm and pleasant rooms become your home away from home. The resort offers wonderful recreational facilities such as a beautiful beach, outdoor pool, restaurants and bar.

INCLUSIONS

- Return Economy Class Airfares with Aircalin ex Sydney/Brisbane/Melbourne
- 5 nights at DoubleTree by Hilton Noumea Ilot Maitre Resort in a Deluxe Garden Bungalow - 4*
- Return Shared Transfers Tontouta International Airport to Port Moselle
- Return Boat Transfers Port Moselle to Doubletree by Hilton Noumea
- Daily buffet breakfast

ITINERARY

Day 1 Airport DoubleTree by Hilton Noumea

Arrive at Tontouta International Airport where our representative will welcome and escort you to your transfer to Port Moselle located approximately 40 minutes away from the airport. Enjoy a scenic 10-minute boat transfer to Doubletree by Hilton Noumea Ilot Maitre Resort.

Overnight stay in Noumea at **Doubletree by Hilton Noumea Ilot Maitre Resort** in a Deluxe Garden Bungalow.

Breakfast



Day 2-5 DoubleTree by Hilton Noumea

Spend the next five days at DoubleTree by Hilton Noumea pampering yourself and satisfying your appetite at one of the many restaurants that are available, each of which has a distinctive ambiance where you can enjoy your meals while relaxing by the Pool Bar or at the Beach Cafe La Boussole that offers light meals for casual dining. While you're there, refresh yourself at the Sunset Bar with a variety of drinks.

Overnight stay in Noumea at **Doubletree by Hilton Noumea Ilot Maitre Resort** in a Deluxe Garden Bungalow.

Breakfast



Day **6**

DoubleTree by Hilton Noumea Airport

It's time to say goodbye. Checkout and take a boat transfer to Port Moselle. You will then be transferred to Tontouta International Airport for your International flight back home.

ACCOMMODATION

DoubleTree by Hilton Noumea Ilot Maitre Resort

UPGRADE AVAILABLE

Noumea

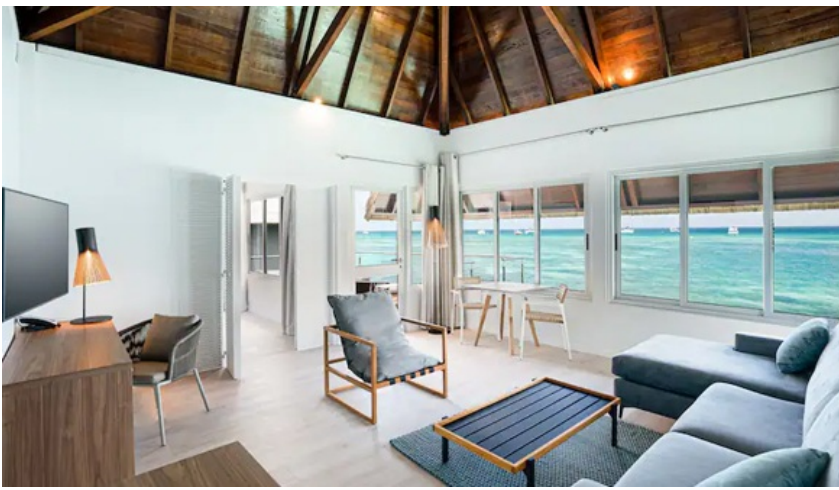
An island retreat with city perks in reach. A short boat ride from Noumea, the resort is exclusively located on a tropical islet, a marine reserve lush with gardens and aquatic life. View the sunset from an overwater bungalow, situated on the New Caledonia lagoon. Snorkeling and jet skiing await, as does an outdoor pool facing the sea. Enjoy the warm breeze, casual meals, and cocktails in the hotel's four restaurants.



Room Upgrades

Deluxe Overwater Bungalow

An experience not to be missed, the overwater bungalows feature a spacious lounge area with a king-sized bed, a queen sofa bed, tea/coffee facilities, fridge, 55-inch HDTV and views directly over the lagoon. The bedroom has panoramic views and a 45-inch HDTV to keep connected after a relaxing day. With a bathroom as big as the bedroom, enjoy the separate bathtub and rain shower complete with DoubleTree amenities.



Prices are dynamic based on travel dates. Please proceed to [Book Now](#) or [Contact Us](#) for details.

One Bedroom Villa

Enjoy the extra space in the 53 sq.m. one bedroom beach villa located at the far tip of the island with direct access to the beachfront. The villa features a separate bedroom with king-sized bed and a separate lounge area with double sofa bed, 55-inch HDTV, tea/coffee facilities, microwave and fridge. Floor-to-ceiling sliding doors open out from the lounge onto the 10 sq.m. deck where you can relax on the sun loungers and watch the sun setting in the evening.



Prices are dynamic based on travel dates. Please proceed to [Book Now](#) or [Contact Us](#) for details.

ADDITIONAL INFORMATION

OFFICIAL LANGUAGE

French, English

LOCAL CURRENCY

French Pacific Franc (XPF)

International flights included in this package are based on lead-in fares and are subject to limited availability. Our team will advise you of any airfare differences to the advertised package price, if necessary. Please note that actual fares may vary depending on factors such as travel dates, seat availability, and airline policies. Additional charges may apply for flight upgrades or changes.

Excluded

- Domestic airfares and taxes, unless otherwise specified in our holiday package
- Visa expenses, processing and issuance fees
- Meals other than as specified in our holiday package i.e. mandatory festive dinners
- Travel Insurance or expenses of a personal nature (mini-bar, phone call, laundry, etc.),
- Tips or gratuities to guides, drivers, porters, hotel, restaurant or boat staff, etc.
- Or any other travel expense that has not been included in our holiday package